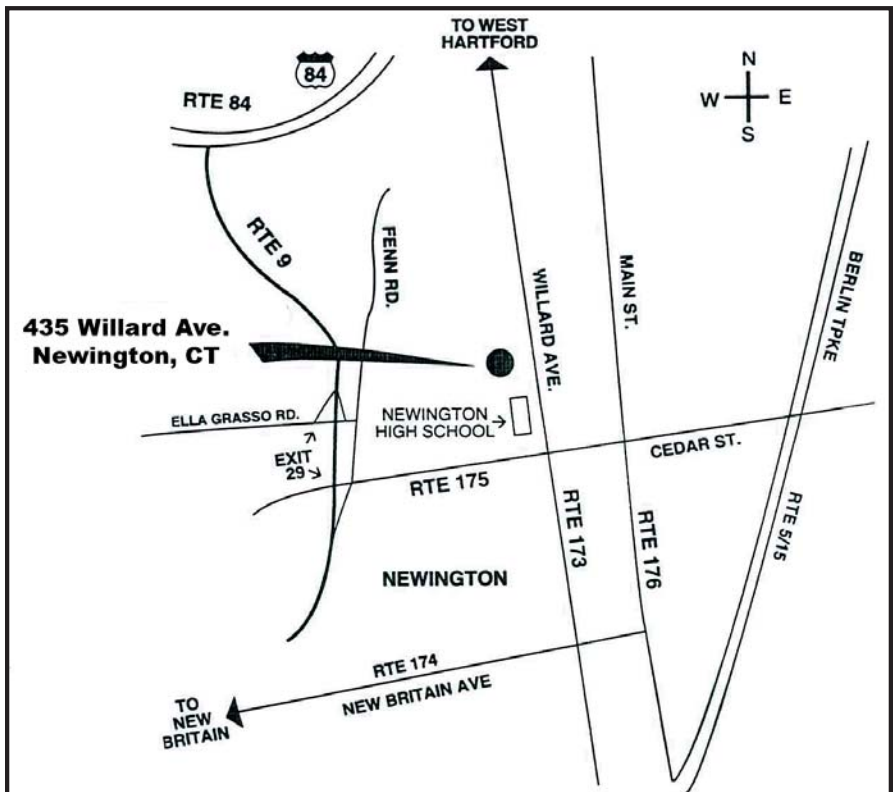


DIRECTIONS: TO NEWINGTON OFFICE

From Route 9 North: Take Exit 29. Make right off exit ramp onto Cedar St./CT 175. Travel 1.2 miles and make left onto Willard Ave./CT 173. Office is located 0.6 miles on the left past Newington High School.

From Route 9 South: Take Exit 29. Make left off exit ramp onto Ella Grasso Blvd. Travel 0.1 miles and make a right onto Fenn Road. Travel 0.2 miles and make a left onto Cedar St./CT 175. Travel 1.2 miles and make a left onto Willard Ave./CT 173. Office is located 0.6 miles on the left past Newington High School.



Newington • (860) 666-2009